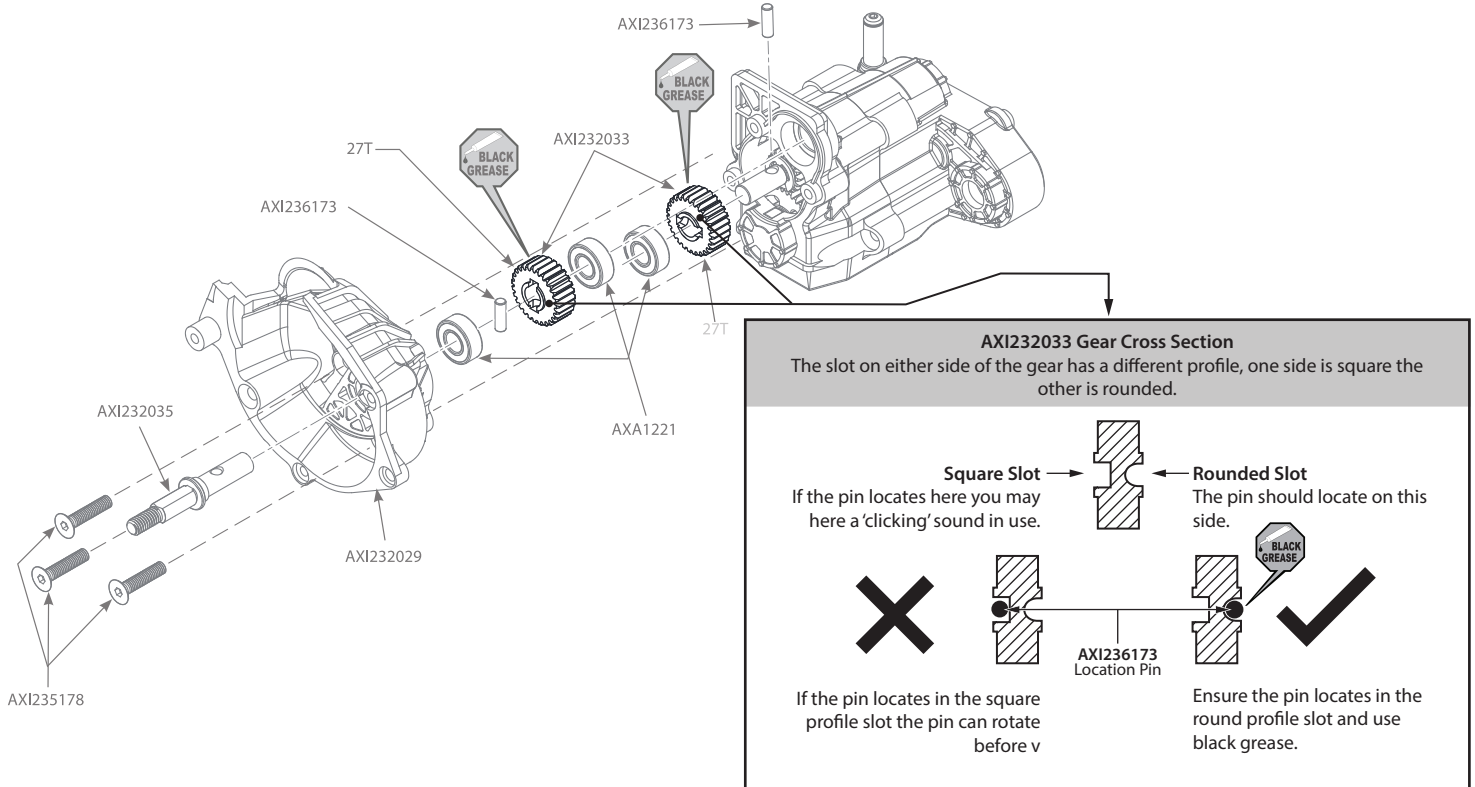


⚠ MANUAL AMENDMENT - PAGE 15

If you are noticing a 'clicking' sound whilst driving your Axial SCX10 III then it is possible that the gears (AXI232033) on page 15 of the manual have been installed incorrect. Carefully disassemble the car, remove the transmission and check the gears are orientated correctly so that the round pin locates within the rounded slot and not the square slot. Add additional black grease within the pin slot to further dampen the backlash that occurs.



⚠ MANUAL AMENDMENT - PAGE 25

On page 25 of the instruction manual there is an incorrectly numbered part on the driveshaft assembly/installation on the second diagram.

